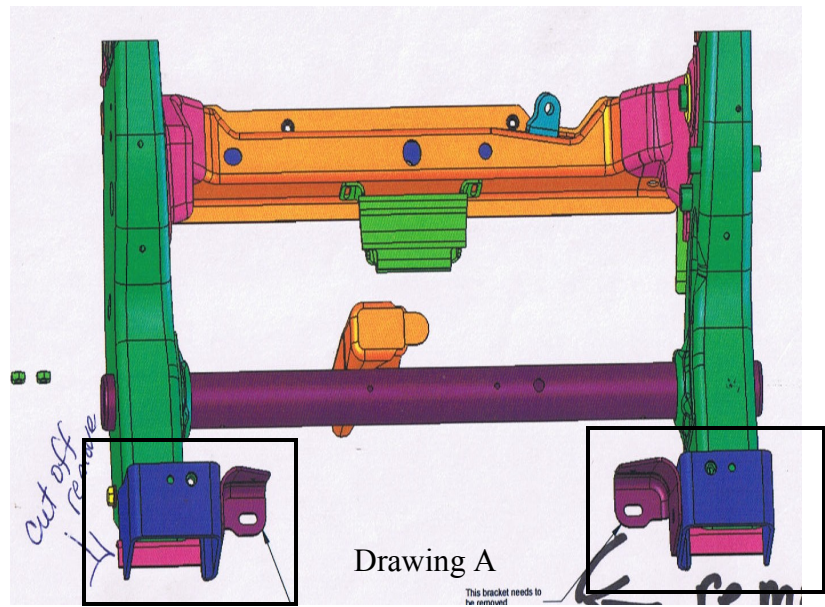
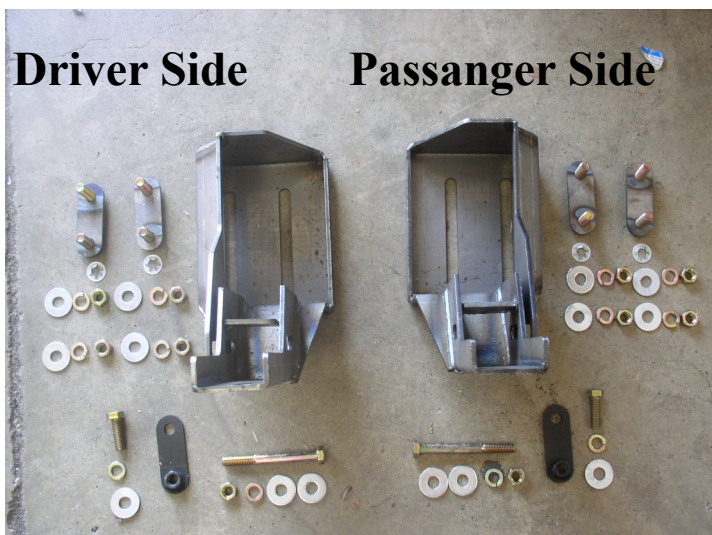




**2000-2002 Chevy 2500 HD ,  
2003-2007 Chevy 2500 HD Classic  
2000-2007 GMC 2500 HD  
Installation Instructions**

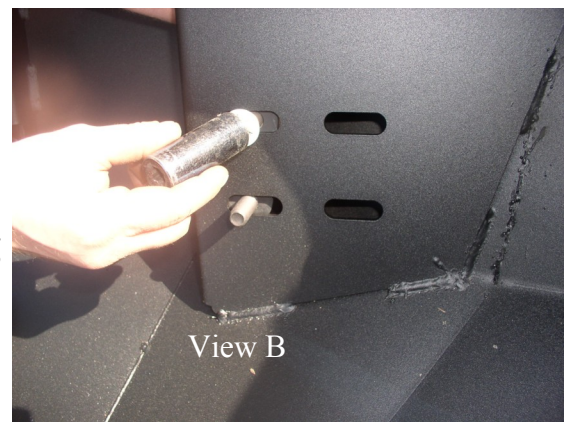
Item NO.	Hardware List	Quantity
1	Frame Mount Brackets	2
2	Double Bolt Plates	4
3	Single Nut Plates	2
4	Galvanized Keepers	4
5	Flat Washers	10
6	Lock Washers	10
7	Nuts	6
8	4 1/2 " Bolts	2
9	Winch Ready Billets with nuts	1 Set



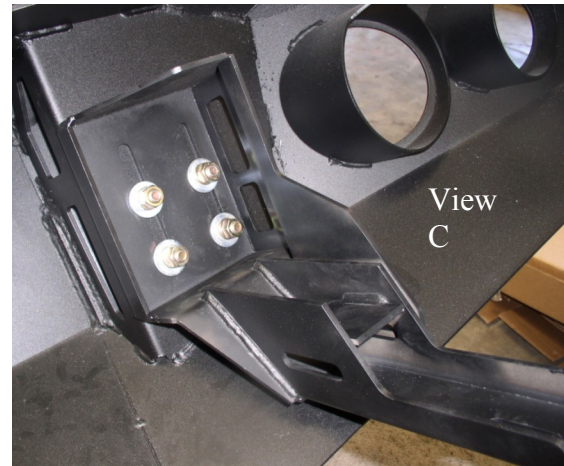
- 1. Remove Stock Bumper**
- 2. Prep Frame horn by cutting off inside frame flanges and the upper steel mount on top of frame horn, with a cut wheel. See Drawing A**

3. Install Double Bolt Plates to the inner bumper mount thru back side wholes provided, securing the top bolt with the retaining keepers. See View B

Then slide the frame bracket over bolts coming thru long slotted wholes, then apply Flat washers, lock washers and nuts. Slightly tighten the nuts, but make sure it is not too tight you need them to have some adjustment in the bracket. See View C

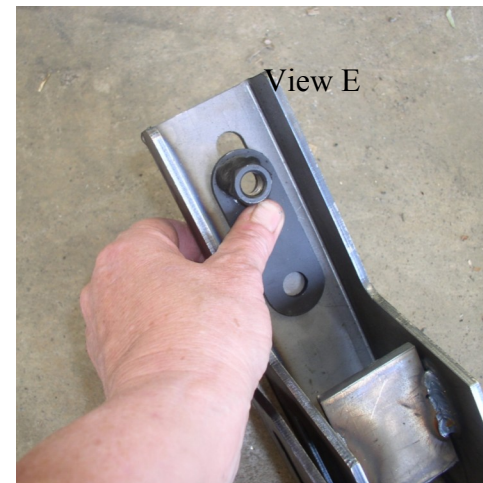


4. You will want to install your Winch Ready Billet and then install you winch and any lighting at this time See Winch instruction sheet.



5. In the frame bracket Channel you will want to apply a bit of grease to nut plate place at lower end of bracket in the channel over slotted whole. The grease will help hold nut plate in place. See View E

6. Measure distance between brackets and distance between frame. Then adjust the frame bracket to measurement. Then insert frame bracket into frame horn. Align the bumper to desired adjustment. Run the 4 1/2 bolts provided thru frame and bracket. Insert the 1 1/2" flat washers lock washers bolt thru the bottom of the frame , screw bolt into the nut plate. You have in and out and up and down adjustment. When you have adjustment tighten up all your bolts.



## 2000-2002 Chevy HD

1. Preparing the front end just like Steps 1 thru 2 you might have to cut under the headlight aluminum bracket to clear bumper top plate. Follow the Steps 3 thru 6
2. It is best to leave the headlights out when installing the bumper.

## 2000-2007 GMC HD

1. When install the bumper to this model you will need to remove your grill to install the bumper. Then re-install grill after installing the bumper.
2. Follow the Steps 1 thru 4 then you will need to remove the 1 3/4" Black trim piece under the grill and headlights remove with a cut wheel carefully.
3. Follow Steps 5 thru 6