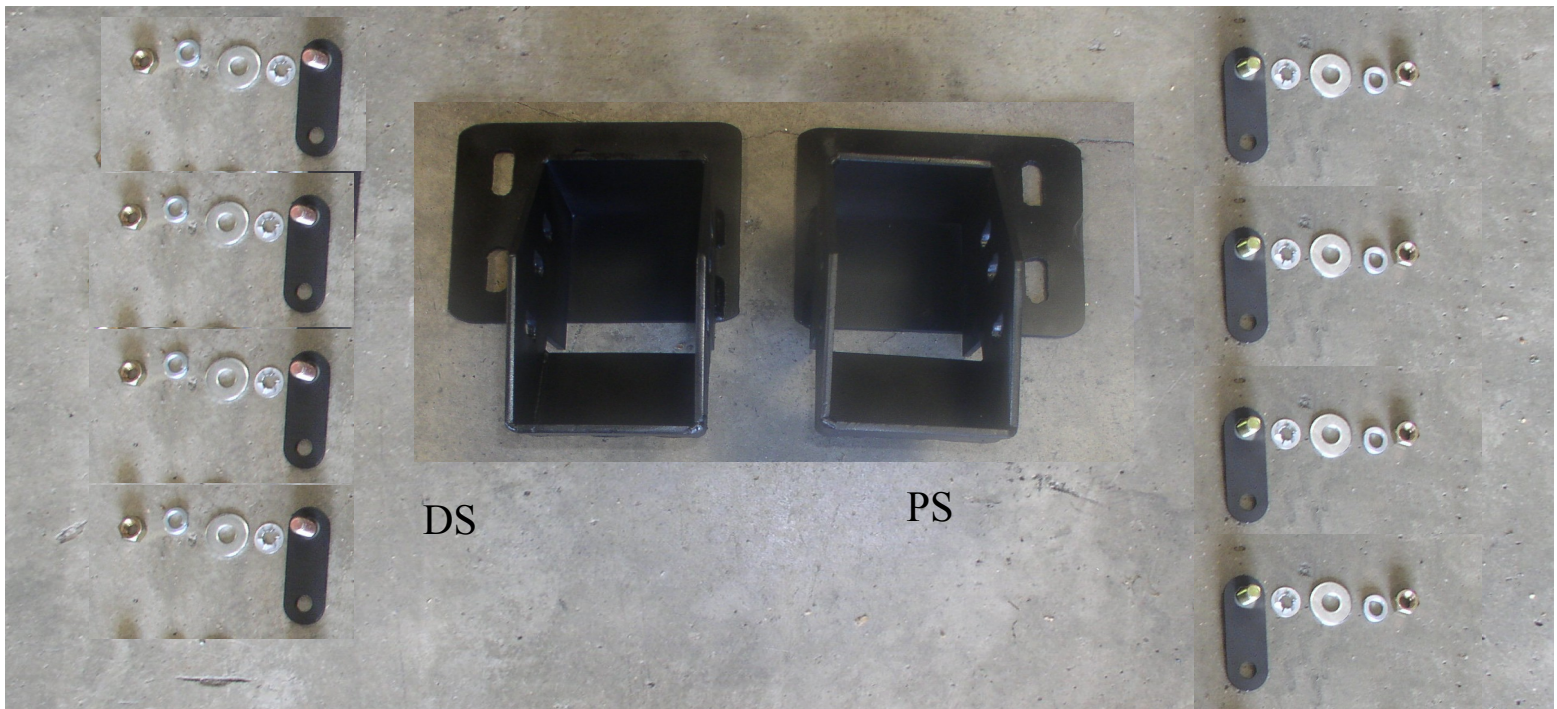




## 2011-2014 Chevy HD Installation Instructions

Item NO.	Hardware List	Quantity
1	Frame Mount Brackets	2
2	Single Bolt Plates	8
3	Flat Washers	8
4	Lock Washers	8
5	Nuts	8
6	Keepers	8
7	Winch Ready Billets	1
8	Billet Nuts	4



1. Remove Stock Bumper and Tow Hooks save stock hardware, Mount the bolt plate to the inside bumper mount using the 4 Bolt Plate and keeping in place with keepers (push on keepers with a socket by holding the back of the bolt plate).



2. Apply the frame bracket to bumper mount driver side and passenger side see photo for reference. Sleeve the bracket over the bolt plates apply the flat washers, locker washers and nuts. Loosely tighten so the bracket still moves for adjustment.



3. Add any lighting or winch option now. The bumper is designed for foot forward mounting all winch hardware will mount through the face of the bumper.



Now the bumper is ready to install to the frame horn.

4. Slip Brackets over the frame horn aligning up frame wholes using stock bolt plates run through bracket, through frame. Now you have in and out, up and down , side to side Line up every thing and tighten to finish



5. We suggest you tack Weld the Frame bracket to the bumper just to make sure it don't come out of adjustment.

