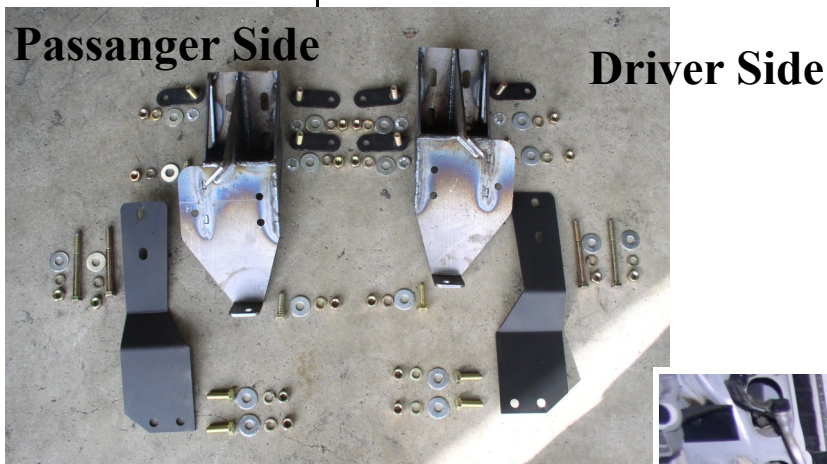


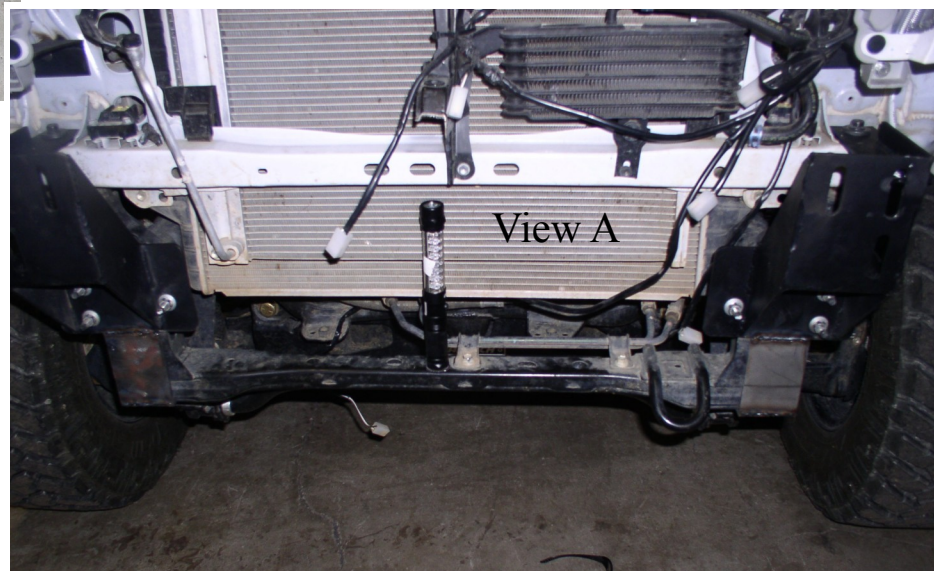


2013– 2015 Toyota Tacoma Installation Instructions

Item NO.	Hardware List	Quantity
1	Mounting Brackets	2
2	Frame Mount Brackets	2
3	Single Bolts	6
4	Galvanized Keepers	6
5	Flat Washers	18
6	Lock Washers	18
7	Nuts	18
8	1 1/2" Bolts	8
9	4" Bolts	4
10	Winch Ready Billets	1 Set
11	Headlight stabilizer bracket	2
12	Stainless Steel bolts Lock Washers Nut	2 Sets

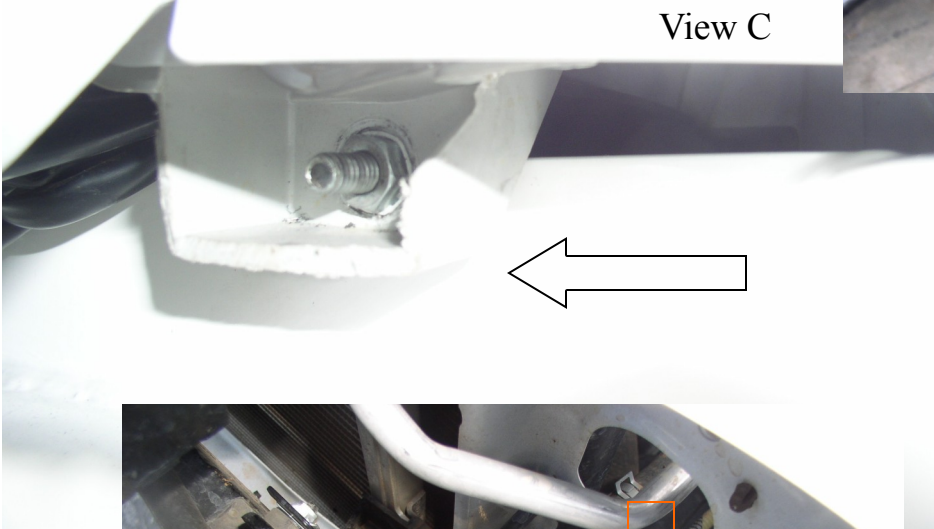


1. Start by Removing Stock Bumper and tow hooks and Grill.
2. Now you have the grill removed you need to cut back front grill support attached to hood latch brace as pictured with cut

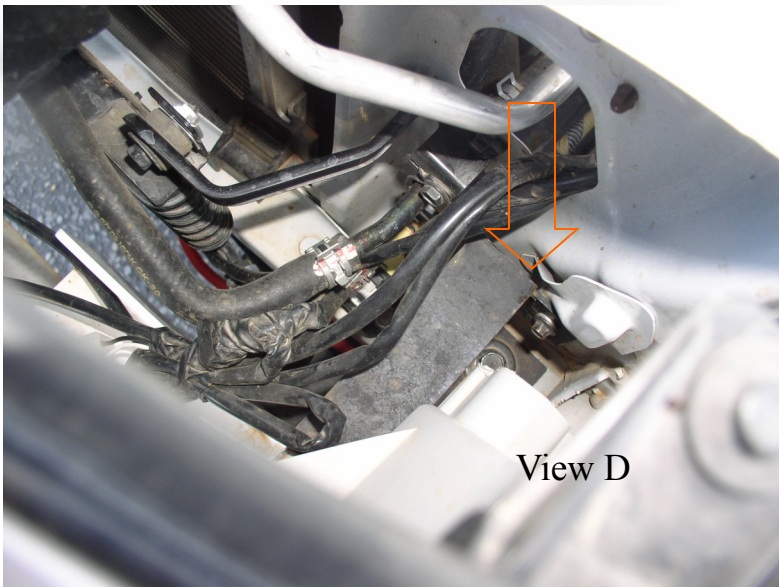


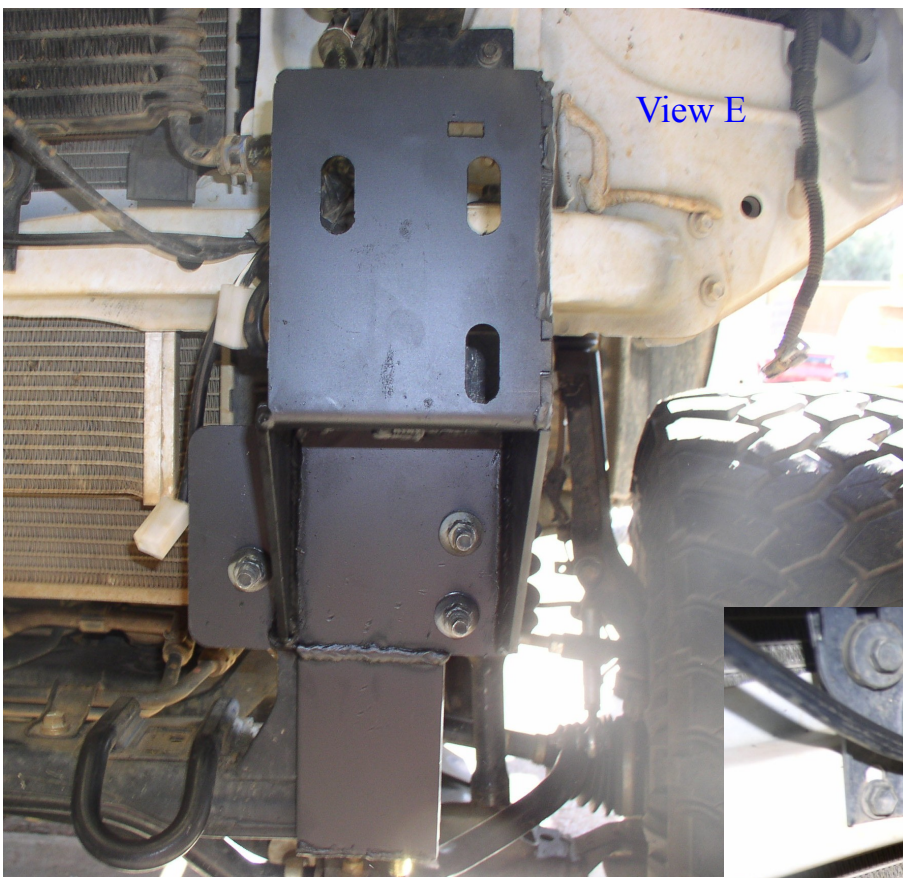


3. Prep each side of fender support by cutting back excess material as shown in View B



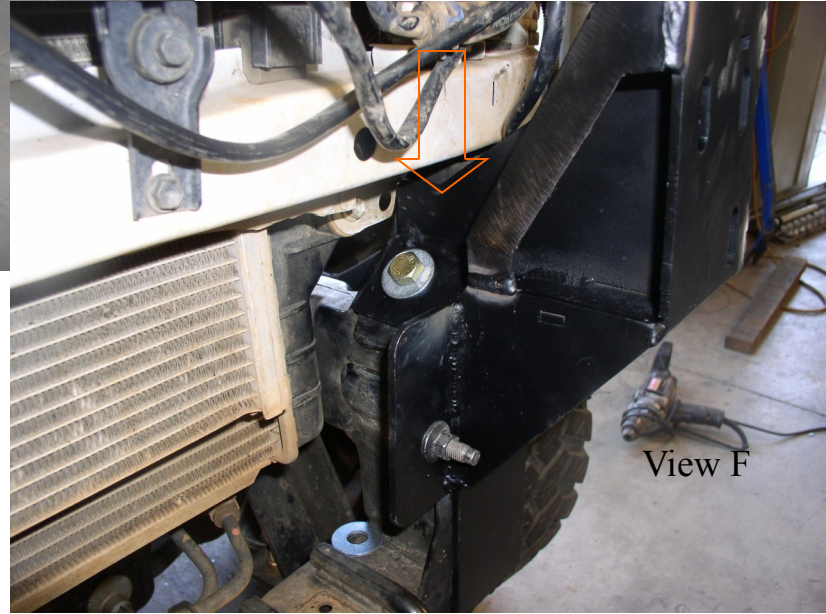
4. Now you will cut the face of the plastic headlight support off leaving the majority of mount left for mounting headlight bracket. provided with mounting hardware. See View C Using stainless steel bolt washer and nut secure the bracket to the back of plastic support and then use oem hardware to mount to core support. See View D





View E

4. Install Mounting bracket by sleeving over OEM Bolts using OEM nuts to secure bracket to frame keep slightly loose this will allow bracket in to position on frame horn aligning the body mount post whole on the inside of frame use 1 1/2 bolts flat washer lock washer and nut through whole,. See red arrow. Align bracket at the bottom of frame horn using OEM hardware, black arrow See View E, F

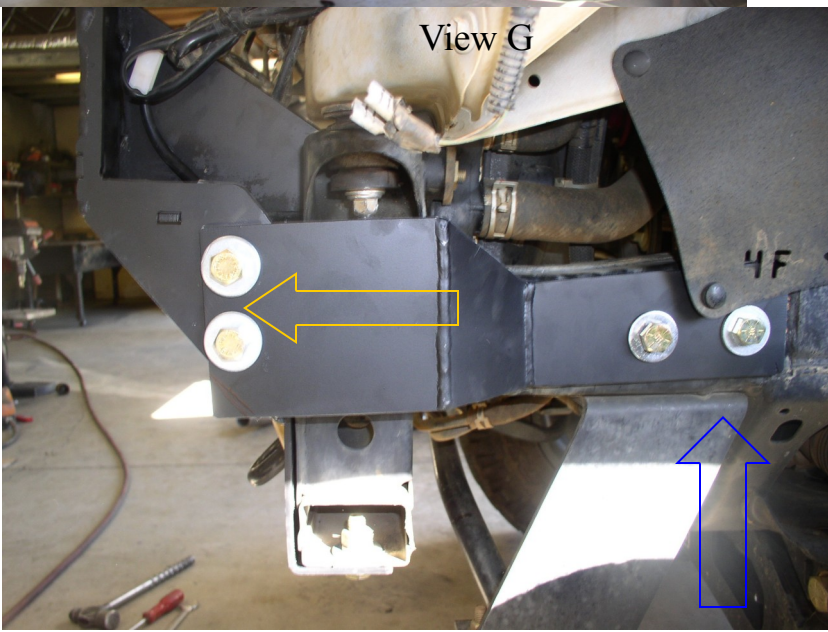


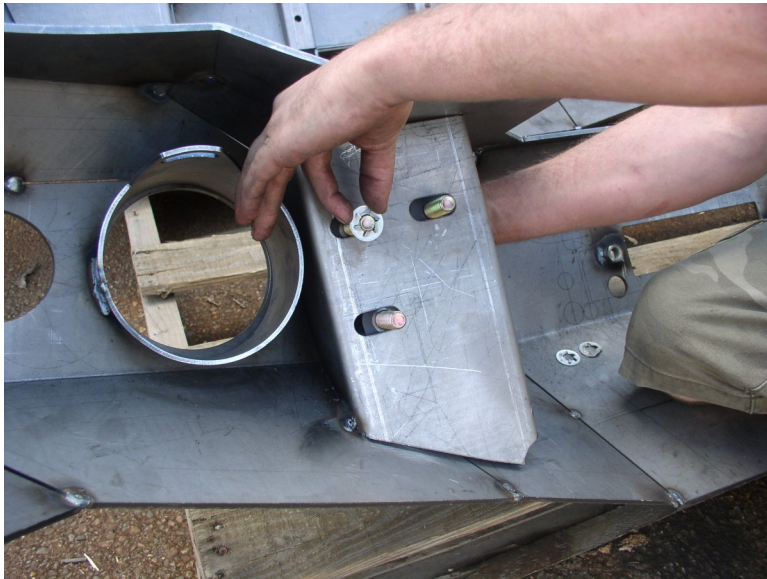
View F



View G

5. Use the Frame support bracket to secure to the mounting bracket to Frame horn. By using the 1/1/2 bolts, washers, lock washers and nuts through the side of the Frame support bracket and Mounting bracket. See view G Yellow Arrow Then run 4" long bolts through the Frame support bracket and frame horn secure with washer, lock washer and nuts . See Blue Arrow





6, Install the single bolt plates in back of bumper mount by pushing the spring keepers over the bolt with a 3/4 deep socket.

See View H

At this time install Winch Ready Billets , winch and lighting .

Now you are ready to install bumper to brackets by slipping bolts on bumper mount in to the wholes on the face of the mounting bracket. Note you will have to tuck the bumper up behind headlight mount and then aligning bolts in to wholes on bracket. Install flat washer , lock washer and nuts. Adjust bumper side to side and up and down for desired fit. Tighten all bolts. Now you can install grill in it correct position.

