



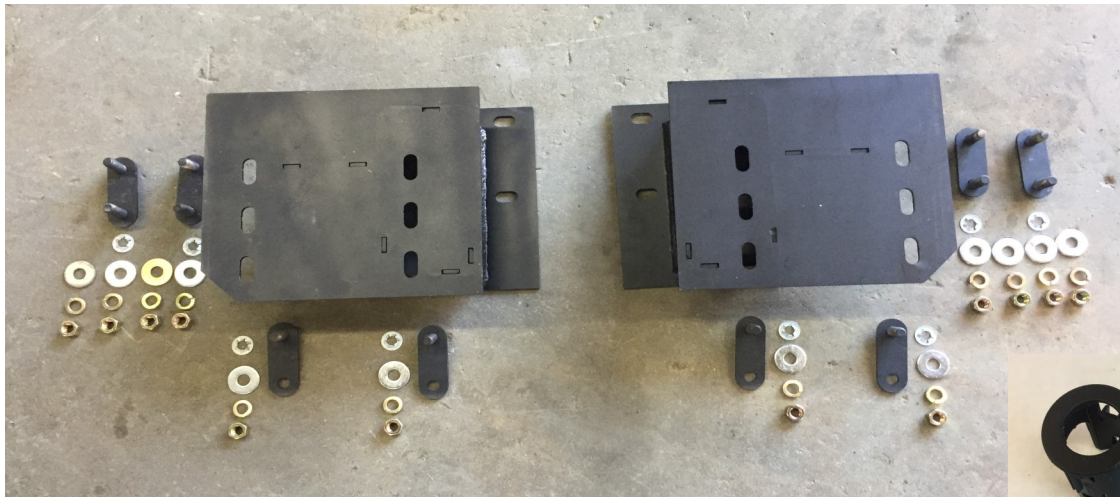
2015-2019 Chevy 2500, 3500 Installation Instructions

Item NO.	Hardware List	Quantity
1	Frame Mount / Bumper Mount Brackets	2
2	Double Bolt Plates	4
3	Single Bolt Plates	4
4	Keepers	8
5	Flat Washers	12
6	Lock Washers	12
7	Nuts	12
8	Front Parking Sensor Housings 25844782	2
9	End Cap Fill Plates	2
10	Winch Ready Billets	1 Set

Passenger Side

Driver Side

Bumper Mounts Brackets

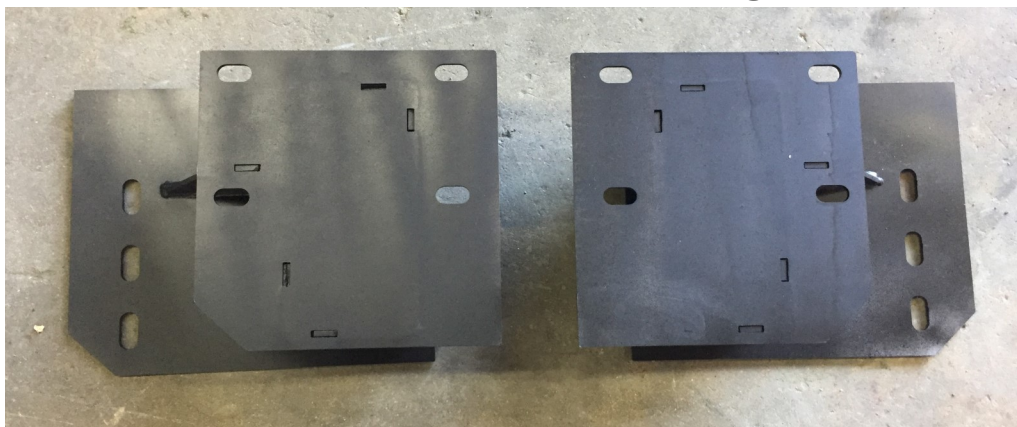


Driver Side

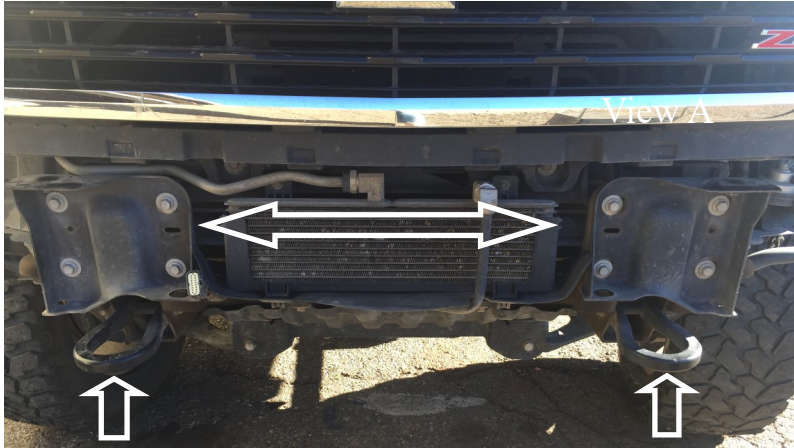
Passenger Side



Frame Mount Bracket



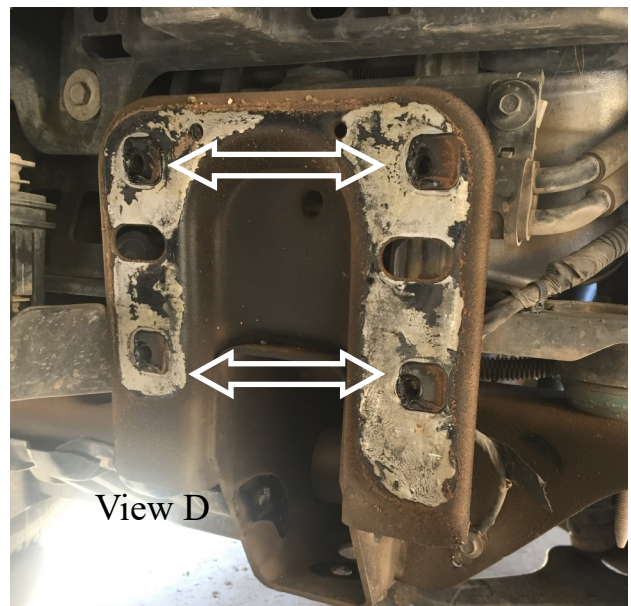
1. Start by Removing Stock Bumper , Grill, Frame Mount Ends and tow hooks see View A. Remove the Sensor Harness and the two out side sensor ports. (make sure you mark the sensor ports so you put them in the correct location).



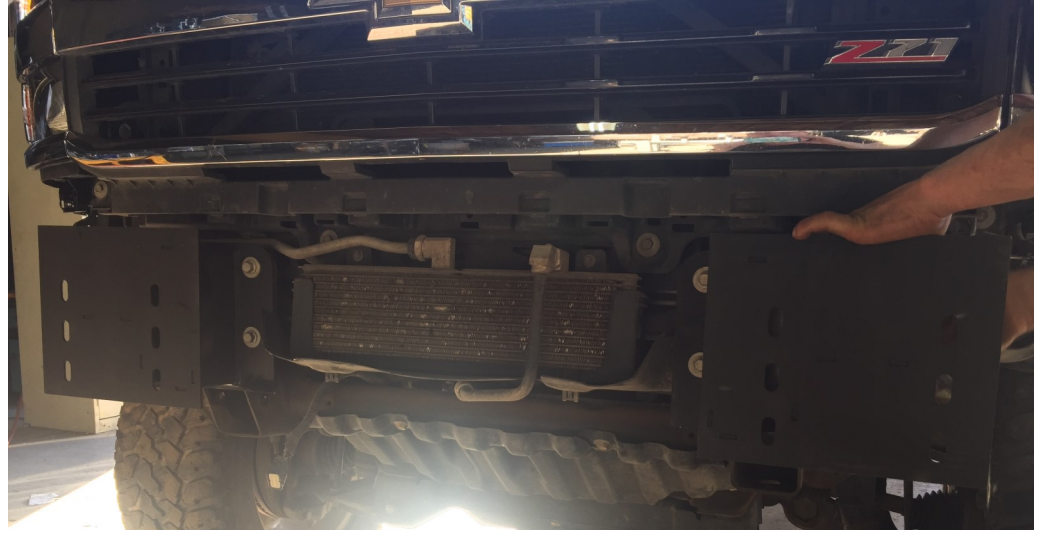
2. In some cases you want to remove the hard plastic piece under each head light assembly. See View B, and C



3. With all large guards Winch Ready suggest to upgrade all bolting to frame horn with 1/2" grade 8 hardware. By drilling out the 4 bolt wholes of the frame horn. See View D



4. Then Apply Froame Mount Brackets to the Frame horn with upgrade option or use stock hardware. See View E



5. Now you can install the sensor retainer to Winch Ready Bumper the two from stock bumper and the two in hardware kit (part 25844782), through the face of the bumper until it fits tight. Now you will weave the sensor wiring harness through the bumper mounts to each port, you will push the sensor through the backside of the sensor retainer until you here is snap through the back of retain-er. See View Below



6. Now you install the bolt plates coming through the back of the bumper mount, with the bolt threads showing you push the keepers on with a socket holding the bolt plate firmly from the backside of bumper mount it will hold the bolt plate in position. Repeat for all other bolt plates See View F

7. Now apply any accessories to the inside of the bumper such as lights and winch. See Winch Instructions for foot forward mounting.

8. Now your are going to apply the bumper aligning the bolts up to the Frame Fount bracket. After bolts through Mount Bracket apply with flat washers, lock washers and nuts. Slightly tighten enough that the frame bracket will move up and down and side to side.



Winch

Lighting



9. Now to adjust the bumper into place You will have up and down and side to side adjustment when you tighten the bracket to the bumper mount. When you have it in adjustment tighten all nuts and bolts with a impact wrench

10. You should tack weld the brackets in place and to the frame to insure no movement.

11. Apply the end cap fill plate with mounting hardware. Trim the wheel well and tuck in to the back of the end cap to the bumper. Fasten end cap the to end cap fill plate.



End Cap Fill Plate will fill this gap in the wheel well

