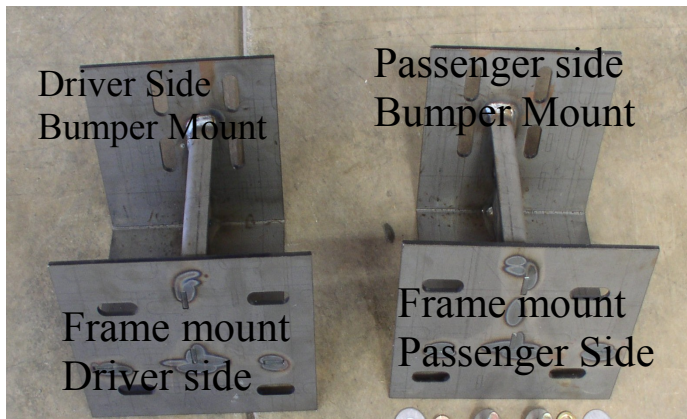
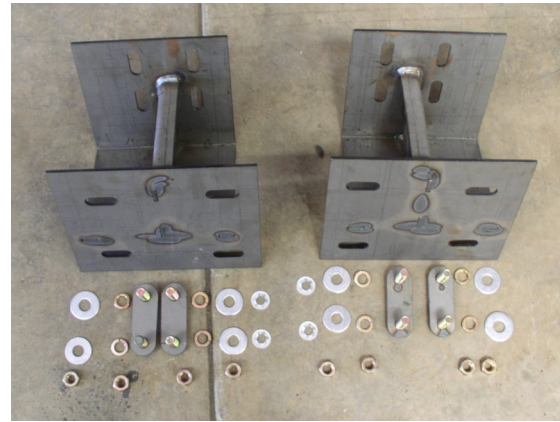




06-08 Dodge 1500 Instructions

List of Hardware

- 4 Double Bolt Plate
- Spring Keepers
- 8 Flat Washers
- 8 Locker Washers
- 8 Nuts



1. Remove Stock bumper. Apply Double bolt plates to the inner bumper bracket as pictured in view A. using the spring keepers to hold bolt plate in place.
2. You will want to mount your winch in at this time foot forward mounting.
3. Apply bracket to inner bumper mount through bolts, apply flat washer, lock washer and nut see view B. Slightly tighten leaving some movement in bracket for adjustment.
4. Now you are ready to mount to frame horns. Using stock hardware. Adjust up and down and side to side. Once you have it in your desired position. Tighten all the bolts.

