

2010 - 2016 Dodge 2500-3500



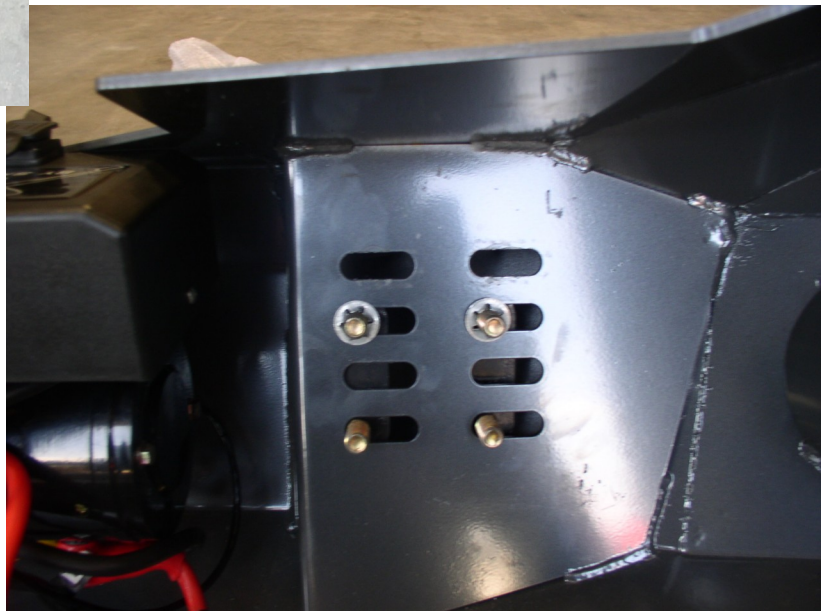
Installation Instructions

Item NO.	Hardware List	Quantity
1	Frame Mount Brackets	2
2	Double Bolts Plates	4
3	Single Bolt Plates	2
4	Galvanized Keepers	5
5	1" Flat Washers	10
6	Lock Washers	10
7	Nuts	10
8	Winch Ready Billets	1 Set

Driver Side **Passanger Side**



1. Start by Removing Stock Bumper and tow hooks. Install Winch in face of bumper



2. Install Double Bolt Plates to the inner bumper mount thru back side wholes provided, securing them with retaining keepers. Then attach frame mount bracket to bolts coming thru with Flat washers, lock washers and nuts. Don't tighten down you need them to have some



3. Then attach frame mount bracket to driver side bolts coming thru with Flat washers, lock wash-ers and nuts. Don't tighten down you need them to have some adjust-ment.

You will want to repeat this for the passen-ger side.

4. You will want to add any lighting and winch options at this time.



5..Measure distance between brackets and distance between frame. Then adjust the frame bracket to measurement. Then insert frame bracket into frame horn. Use Stock hardware through frame and mounting bracket. Align the bumper to desired adjustment. Tighten up all your bolts.